

MODEL MK-101P

PLETHYSMOMETER FOR RATS OR MICE



MK-101PR (Rat) MK-101PM (Mouse)

Introduction

MK-101P is a plethysmometer designed for precise and rapid screening of small rodents for inflammation or edema of the paw. The volume is determined by weight and specific gravity, based on the principle of Archimedes. When the animal paw is dipped into the water in the cell, down to the point pre-marked on the paw, the exact volume of the paw will be displayed. A finger rest enables stable measurement to be made.

Using the DCS-101 Data Collection Software the data obtained can be exported to a personal computer and stored as a CSV file. Printer is available as an optional extra in two types --- Thermal and Dot-Impact.

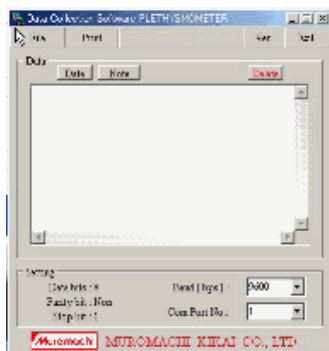
Main Features

- A surfactant or salt solution is no longer required. Only tap water is good enough.
- An LED digital display shows the exact volume of the paw.
- A finger rest enables stable measurement to be made.
- High resolution volume measurement (RAT:0.01 ml, MOUSE:0.001 ml)
- Zero can be reset at any point.
- Both printer and RS-232C outputs are provided on the rear panel.
- The DCS-101 Data Collection Software is included in the standard system.

Specifications	
Measurement Range	R a t: 0 - 7 ml Mouse: 0 - 0.5 ml
Display	LED, 3 digits
Output	Printer and RS232C
Power	Please specify your input votage.
Power Consumption	30 Watts
Instrument Dimensions	W200 x D275 x H145 mm
Sensor	Either Rat or Mouse sensor is built in the main unit.
Instrument weight	3.2 kg

MK-101P Standard System Includes:	
Main Unit	1
Pedal Switch	1
Zero Switch	1
Measurement Cell	1
Finger Rest	1
DCS-101 Data Collection Software	1
USB-Serial cable	1
Operation Manual	1

Optional Extra
Dot-Impact Printer
Thermal Printer



Data Collection Software



Thermal Printer



Dot-Impact Printer

NOTE: Please specify MK-101PR (Rat) or MK-101PM (Mouse) when ordering.

Specifications are subject to change without notice

MUROMACHI KIKAI CO., LTD.

4-2-1 Nihonbashi-Muromachi, Chuo-ku, Tokyo, 103-0022 JAPAN
E-mail:sales@muromachi.com

TEL:+81-3-3241-2444
FAX:+81-3-3241-2940