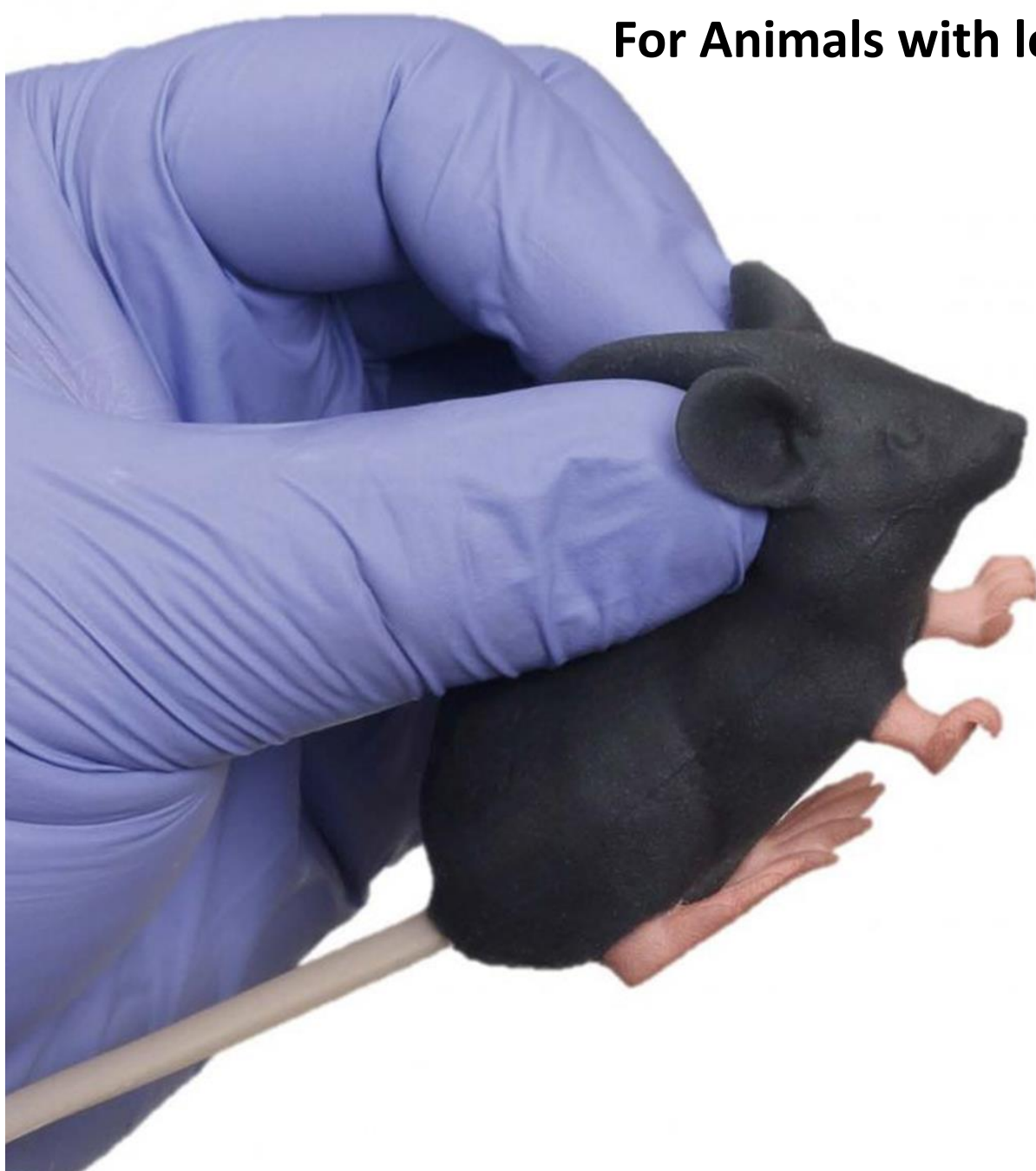


# Mimicky<sup>®</sup> Mouse

Experimental procedure Simulator

For Animals with love.



## Features

**This laboratory animal replica aligns with all of the 3R principles!**

～Simulates the texture of a live mouse～

### The 3R Principles

**Refinement:** Minimize the pain that may be experienced by animals.

**Reduction:** Minimize the number of animals used per experiment.

**Replacement:** Avoid or replace the use of animals in experiments where they otherwise would have been used.

**Mimicky® Mouse** is the laboratory animal replica that enables users to gain proficiency in techniques of handling laboratory animals, while contributing to the realization of all of the 3R Principles by utilizing alternative methods for living animals, reducing the number of animals used in experiments, and avoiding pain and suffering of animals.

### **Mimicky® Mouse - a wide variety of uses! -**

For example, training of various techniques for oral administration, such as tightness and angle while gripping an animal by the neck, sonde insertion angle and depth, and administration speed, can be performed with **Mimicky® Mouse** before using live animals. Additionally, there is no need to worry about being bitten, so these techniques can be acquired with peace of mind, which allows for smooth performance in actual experiments using living organisms.

Use for repetitive training, such as handling and oral administration, before using a living animal contributes to conducting more accurate animal experiments and promotes animal welfare. These are the concepts of **Mimicky® Mouse**.



### Usage Example

- Training for restraint
- Training for oral administration
- Training for tail vein administration
- Training for intraperitoneal administration (only to check the insertion position while restraining)

\*Do not insert the needle into the peritoneal cavity.

## Features

Name	Specifications	Quantity
Mimicky® Mouse Body	Approx. 70(L)mm×39(H)mm×31(W)mm 25g	1
Mimicky® Tail	Approx. 130mm (exposed section approx. 110mm) 3g	1
Baby Powder	100g	1
Lubricant Oil	50ml	1
User's Guide	4 pages	1



Mimicky® Mouse Body



Mimicky® Tail



Lubricant Oil

- All items in the product package will be delivered packed in an exclusive box.
- The customer must attach the tail to the body after the product is delivered.
- Avoid storing the product in high temperatures or locations subject to the direct sunlight.
- Specifications are subject to change without notice.
- Note that the color in the photos may differ from that of the actual product.