

MODEL MK-AT210D

ALL-IN-ONE SMALL ANIMAL ANESTHETIZER



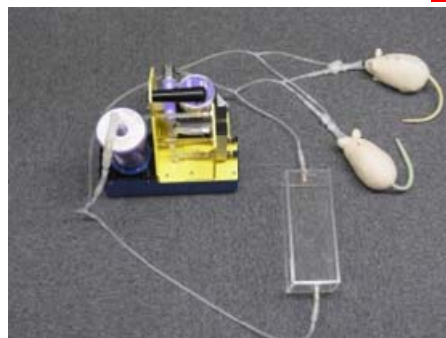
MK-AT210D is a cost & space-saving all-in-one model that combines anesthetizer with scavenger. Mixed anesthetic gas of 0.5-5% concentration, which is considered suitable for anesthetizing small animals, can be supplied in a stable condition over a long period of time. Unique keyed anesthetic agent adaptor prevents operator from erroneous filling or accidental spill of anesthetic gas. Burdensome gas tank is no longer required since air pump is built in.

MAIN FEATURES

1. Simple operation.
2. Compact table-top model --- portable from room to room.
3. Can be used from the very low flow volume of 0.5LPM and waste anesthesia gas can be minimized.
4. Nonflammable and much safer than anesthesia with ether.
5. Depth of anesthesia can be easily adjusted.
6. Burdensome gas tank is no longer needed, if room air is used as carrier gas. Air-pump is built in.
However, if O₂ (oxygen) or other gases are used as carrier gas, gas tank, regulator and flow meter are required.
7. Key-Fill design prevents operator from erroneous filling or accidental spill of anesthesia gas.
8. Using the optional MK-MGD8 anesthetic gas can be delivered to multiple (up to 8) animals at the same time.



Silicon Nose Cone



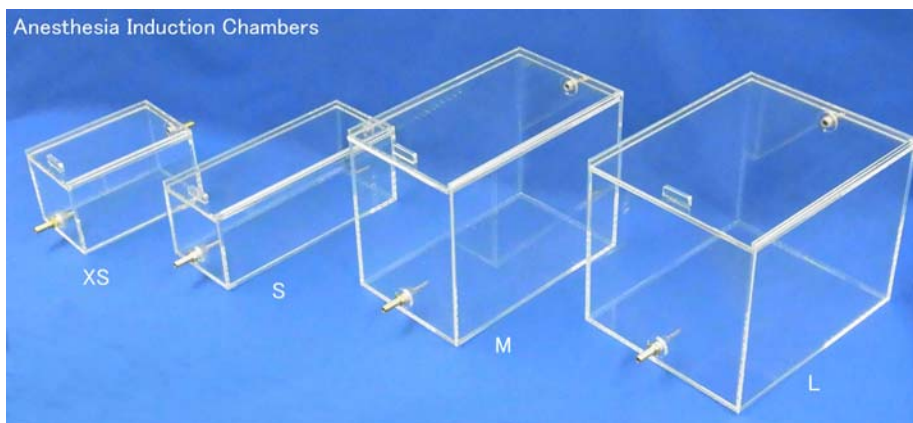
Connection Diagram

Induction Chamber

Air-tight Chamber



Anesthesia Induction Chambers



SPECIFICATIONS

Flow Rate	0.5 - 5LPM
Concentration	0 - 5 %
Filling Capacity	250 ml
Power	Please specify your input voltage.
Instrument Dimension	W235 x D330 x H310 mm
Weight	Approx. 11 kg



THE STANDARD SYSTEM INCLUDES:	
Main Unit	1
Vaporizer (any one from the list) with bottle adaptor	1
Nose Cone (silicon nose cone rat and mouse)	Any two
Silicon Tubing	1
Scavenger (AneTrap4 waste anesthesia gas filter needed)	1

VAPORIZER
ISOFLURANE
SEVOFLURANE

OPTIONAL EXTRAS	
Silicon Nose Cone	Placed lengthwise against an animal nose
MK-TB1 Airtight Induction Chamber	Used for initial anesthetization under airtight condition W280 x D280 x H200 mm
Induction Chamber XS	16 x 10 x H10 cm
Induction Chamber Small	25 x 10 x H10 cm
Induction Chamber Medium	25 x 15 x H20 cm
Induction Chamber Large	25 x 20 x H20 cm
Oxygen Flow Meter	Used to mix oxygen
MK-MGD8 Multiple Gas Delivery Option	Used to deliver anesthetic gas to multiple (up to 8) animals
AneTrap4	Waste Anesthesia Gas Filter (4ea/pk)

Specifications are subject to change without notice.

MUROMACHI KIKAI CO., LTD.

4-2-1 Nihonbashi-Muromachi, Chuo-ku, Tokyo, 103-0022 JAPAN
E-mail:sales@muromachi.com

TEL:+81-3-3241-2444
FAX:+81-3-3241-2940