

#3 Standard



12 cm

No. 10003-12

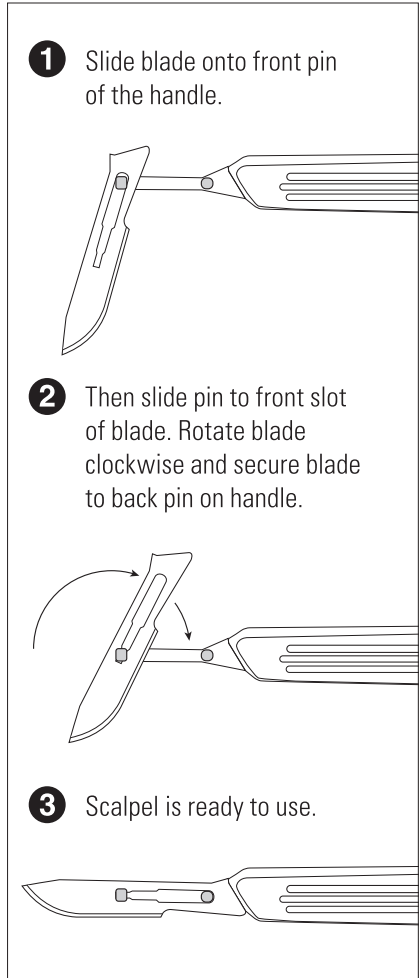
#3 Secure

A safety lock holds the blade securely, and allows simple and safe blade attachment and removal.



12 cm

No. 10003-13



Blades for #3 and #7 Scalpel Handles

The alloy used has a high carbon content which provides a longer lasting edge. Blades come individually wrapped. **Non-sterile.**



#10 blades

Box of 100 blades

No. 10010-00



#11 blades

Box of 100 blades

No. 10011-00



#12 blades

Box of 100 blades

No. 10012-00



#15 blades

Box of 100 blades

No. 10015-00